

# *The Carmenera*

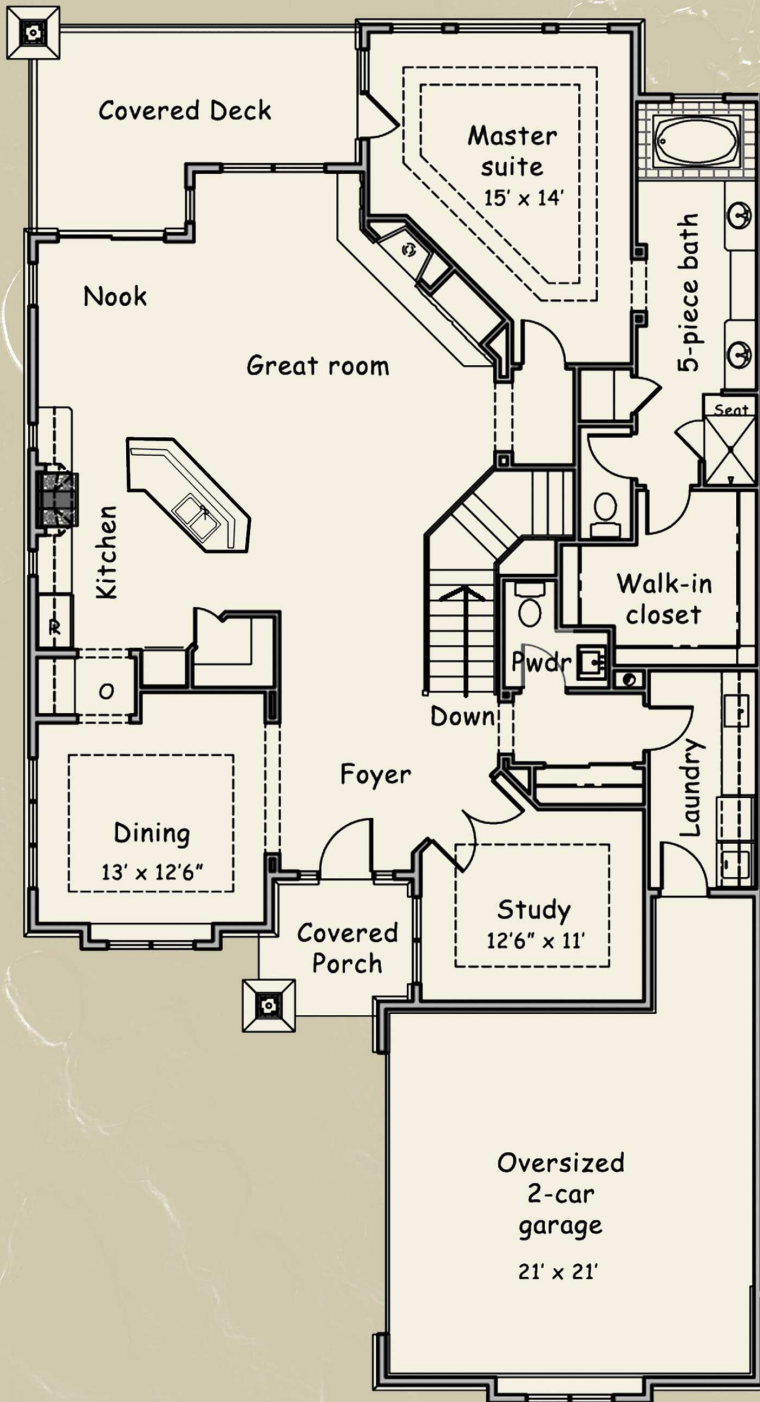
*Three bedrooms plus a study, 3.5 baths and attached 2-car garage. Approximately 3276 finished square feet. Ranch design with a walkout or garden lower level.*



*Chateau Ridge*

VINTNERS COLLECTION  
CASTLE PINES VILLAGE

Renaissance  
Homes 



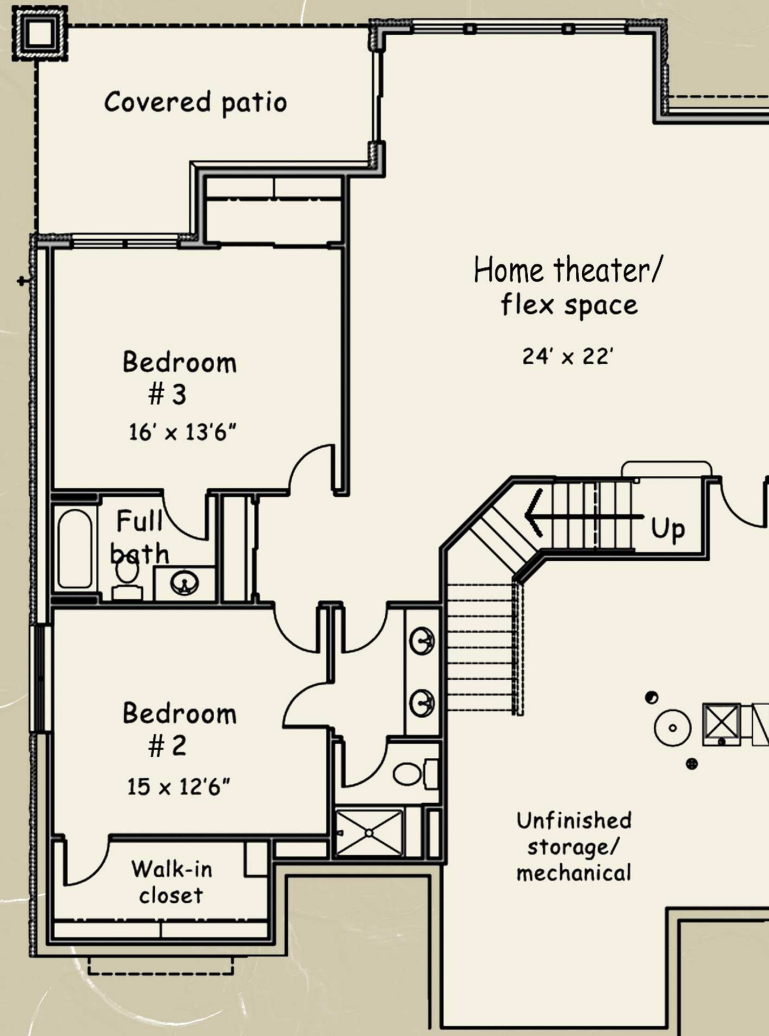
## Residence C - The Carmenere

Main Level 1960 Sq.Ft.

Lower Level 1316 Sq.Ft.

---

Total 3276 Sq.Ft.



**Renaissance  
Homes™**



\* Specifications and inclusions may change at any time at the discretion of the builder. Floorplans and renderings are artist's conception.